



Exam : 646-653

**Title : Wide Area Application Services for
Account Managers(WAASAM)**

Ver : 11.08.07

QUESTION 1

Which licensing option should you suggest to a client that is concerned with secure file caching?

- A. central license
- B. transport license
- C. enterprise license
- D. copyright license

Answer: C

QUESTION 2

Which two statements about application security attacks are true? (Choose two.)

- A. Firewalls don't fully protect against application-layer attacks. True security is L2-L7.
- B. QoS can mitigate most application security attacks.
- C. An IPS will protect against all application level attacks aimed at advanced applications.
- D. Application-specific attacks are rare and they never occur over the WAN.
- E. Customized code and custom applications deployed over the WAN to partners and customers are particularly vulnerable.

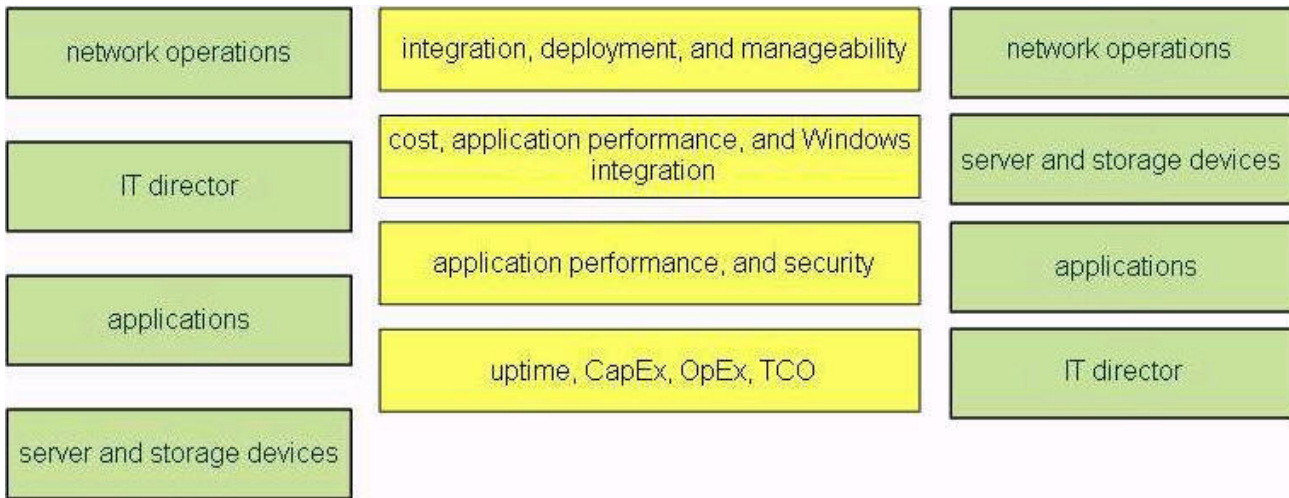
Answer: A, E

QUESTION 3

Click and drag the IT decision maker or team on the left to its decision making area on the right.

network operations	integration, deployment, and manageability	Place here
IT director	cost, application performance, and Windows integration	Place here
applications	application performance, and security	Place here
server and storage devices	uptime, CapEx, OpEx, TCO	Place here

Answer:



QUESTION 4

How do you keep administrative traffic from traversing the WAN?

- A. by deploying centrally-managed services
- B. by deploying a firewall with managed services
- C. by using an intrusion prevention system with centrally-managed services
- D. by using an IVS

Answer: A

QUESTION 5

What are the two factors that contribute to diminishing application performance? (Choose two.)

- A. bandwidth infrastructure costs
- B. lack of storage infrastructure
- C. physical network latency
- D. transport network management
- E. transport protocol management

Answer: C, E

QUESTION 6

Which three types of services are ones that WAAS deployment can offer to remote users? (Choose three.)

- A. security
- B. file
- C. print
- D. packet
- E. wireless
- F. call-control

Answer: B, C, F

QUESTION 7

What is the goal of the typical distributed infrastructure?

- A. to increase bandwidth and latency
- B. to reduce infrastructure cost and complexity
- C. to consolidate as much as possible in the data center
- D. to improve data protection techniques in the data center

Answer: C

QUESTION 8

Why is it necessary to prioritize traffic when a user tries to access physical resources over the WAN?

- A. to ensure communications are secure
- B. to ensure access to applications is provided
- C. to ensure application service levels are reliable
- D. to facilitate consolidation efforts

Answer: C

QUESTION 9

Which of these is a major concern for branch offices?

- A. high latency
- B. high bandwidth
- C. low latency
- D. low bandwidth

Answer: A

QUESTION 10

Which of these is effective at reducing the amount of network latency and number of delays caused by chatty protocols?

- A. firewall solution
- B. WCCPv2
- C. content filtering
- D. intelligent proxies

Answer: D

QUESTION 11

What should be the first thing you remind your customers of when they mention a new rollout of Oracle, SAP, BEA, Siebel, or MS Exchange, or when they mention concerns about their portal performance?

- A. MS Exchange is not supported by Cisco ANS.
- B. Cisco ANS solutions address these key challenges.
- C. Cisco is currently working to support Siebel.
- D. SAP is not needed on a Cisco ANS solution.

Answer: B

QUESTION 12

Which three of these are Cisco WAAS components? (Choose three.)

- A. application servers
- B. WAE appliances
- C. WAAS software
- D. WAE server
- E. WAAS interceptor
- F. WAE engine

Answer: B, C, F

QUESTION 13

Cisco WAAS overcomes performance limitations caused by which three factors? (Choose three.)

- A. WAN bandwidth
- B. server consolidation
- C. latency
- D. packet loss
- E. application acceleration
- F. Fiber Channel switches

Answer: A, C, D

QUESTION 14

Which Cisco load balancer modular solution can provide Cisco WAAS deployment scalability?

- A. ACE
- B. Local Director
- C. Distributed Director
- D. Catalyst 6500 Series FWSM

Answer: A

QUESTION 15

Which Cisco WAAS hardware component resides at branches or remote sites?

- A. ISIS
- B. WAE
- C. core engine
- D. File Edge Engine

Answer: B

QUESTION 16

How does Cisco WAAS preserve your IOS features and services?

- A. by means of network transparency
- B. by means of application proxies
- C. by means of QoS
- D. by means of NBAR

Answer: A

QUESTION 17

In what way, unique in its industry, does Cisco leverage the power of the network?

- A. by deploying Cisco network management solutions for maximum investment protection
- B. by enabling stateful firewall and intrusion prevention services solutions
- C. by tunneling accelerated traffic through QoS
- D. by enabling IOS technology such as QoS to integrate with Cisco WAAS

Answer: D

QUESTION 18

Which aspect of Data Center Application Services allows Cisco ANS to offer the broadest set of solutions for application delivery?

- A. includes server load balancing, application security, and server offloading
- B. focuses only on SAN technologies
- C. uses only WAE appliances for application delivery and data redundancy
- D. uses firewalls, fiber channel switches, and network management solutions

Answer: A

QUESTION 19

Where does Cisco Central Manager run?

- A. on Cisco WAE appliances
- B. on a Solaris server

- C. on a Windows server
- D. on a router

Answer: A

QUESTION 20

What does Cisco WAAS rely upon to get traffic to the WAE for optimization?

- A. CIFS
- B. QoS
- C. network interception
- D. server interception

Answer: C

QUESTION 21

Which three network technologies complement a Cisco WAAS deployment? (Choose three.)

- A. NBAR
- B. RBAC
- C. BGP
- B. QoS
- E. ACLs
- F. EIGRP

Answer: A, D, E

QUESTION 22

Which of these is a facet of Cisco WAAS transparency?

- A. server transparency
- B. linecard transparency
- C. client transparency
- D. appliance transparency

Answer: C

QUESTION 23

Which of these is a Layer 4 WAN optimization component?

- A. DCE
- B. TSO
- C. DRE
- D. DWE

Answer: C

QUESTION 24

What is a good example of how to use the Common Internet File System (CIFS) file services adaptor with Cisco WAAS?

- A. to consolidate edge caching appliances
- B. to consolidate WAE appliances within the data center
- C. to consolidate application server distribution
- D. to consolidate software distribution servers

Answer: D

QUESTION 25

What are two responses you should give to a customer that would like to improve application uptime? (Choose two.)

- A. Consolidate your branch office infrastructure.
- B. Deploy a smaller number of application servers by virtualizing your server farms.
- C. Solutions offered by Cisco provide many configuration options for intelligent failover and redundancy.
- D. Solutions offered by Cisco may be used to improve application uptime
- E. Cisco CSS and ACE enable servers to be added or maintained without service disruption.

Answer: C, E

QUESTION 26

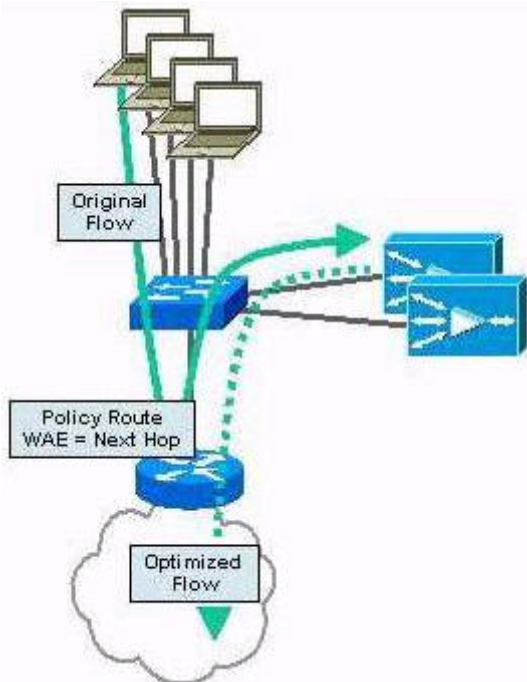
The Cisco Central Manager GUI allows administrators to perform which three actions or sets of actions? (Choose three.)

- A. view reports detailing the effectiveness of acceleration
- B. set up and distribute print drivers
- C. prioritize network traffic through the WAE
- D. correlate security alerts that reach the LAN
- E. accelerate CIFS traffic with the assistance of QoS
- F. create, edit, and delete application policies

Answer: A, B, F

QUESTION 27

Refer to the exhibit.



Which type of Cisco WAAS redirection method can only provide redundancy for up to four nexthop WAE appliances?

- A. Cisco WAE PBR
- B. Cisco WAE WCCPv2
- C. Cisco WAE ACE deployment
- D. Microsoft Exchange deployment
- E. policy redirection

Answer: A

QUESTION 28

Which optimization technique is applied at the transport layer?

- A. Data Compression Elimination (DCE)
- B. TCP
- C. QoS
- D. Data Redundancy Elimination (DRE)

Answer: D

QUESTION 29

Using a lifecycle process in a WAAS pre-sales engagement will help achieve which two objectives? (Choose two.)

- A. reduce storage assessment risks
- B. improve planning opportunities
- C. reduce WAN assessment activity

- D. improve customer satisfaction
- E. reduce LAN assessment activity

Answer: B, D

QUESTION 30

Which two factors contribute to the ROI of data consolidation with Cisco WAAS? (Choose two.)

- A. server offload capability
- B. reduced security infrastructure requirements
- C. the use of NetFlow
- D. reduced storage requirements
- E. reduced bandwidth requirements

Answer: B, D

QUESTION 31

Which method is used to transparently intercept traffic to be optimized?

- A. Policy Based Application Routing (PBAR)
- B. Policy Based Routing (PBR)
- C. Policy Based Agnostic Application Routing (PBAAR)
- D. Policy Based Traffic Routing (PBTR)

Answer: B

QUESTION 32

What is one of the benefits of integrating Cisco WAAS into the network?

- A. it leverages existing network services such as QoS and security services
- B. there is no need for WCCPv2
- C. it allows WAFS to be deployed
- D. no router configuration is needed

Answer: A

QUESTION 33

Which Layer 4 component is responsible for optimization when data is accessed?

- A. DCE
- B. TSO
- C. DRE
- D. DWE

Answer: C

QUESTION 34

Cisco WAAS Central Manager is used to centrally configure, manage, and monitor what?

- A. a fully meshed network
- B. the egress router
- C. a topology of Cisco WAE devices
- D. all Cisco network devices

Answer: C

QUESTION 35

What are the two Cisco IOS services or features that Cisco WAAS preserves in the network? (Choose two.)

- A. MPLS
- B. NetFlow
- C. CEF
- D. QoS
- E. ISIS

Answer: B, D

QUESTION 36

What is required in order for Cisco WAAS to provide WAN optimization?

- A. devices must be deployed at only one site
- B. Cisco WAAS must use PBR
- C. devices must be deployed at one or more branches and in the data center
- D. Cisco WAAS does not support optimizations

Answer: C

QUESTION 37

Which types of applications affect WAN environment performance?

- A. applications that use chatty protocols
- B. applications that are designed for the LAN
- C. applications that use chatty transmissions
- D. access layer switches

Answer: A

QUESTION 38

How many routers and Cisco WAE appliances does WCCPv2 support?

- A. 16 routers and 32 WAE appliances

- B. 32 routers and 32 WAE appliances
- C. 8 routers and 16 WAE appliances
- D. 32 routers and 8 WAE appliances

Answer: B

QUESTION 39

Data Redundancy Elimination (DRE) allows the WAE to maintain what?

- A. a local database of TCP segments that have already been seen by the device
- B. a local database of TCP segments that use MZ compression
- C. avoidance algorithms that safely maximize throughput in lossy scenarios
- D. TCP connections that exit the slow-start phase and progress more quickly to receiving ample throughput

Answer: A

QUESTION 40

Which hardware platform does Cisco WAAS software run on?

- A. ACE module
- B. DRE appliance
- C. WAE
- D. CSM module

Answer: C

QUESTION 41

Which Cisco WAAS requirement results in a greater support for optimizations?

- A. deployment of WCCP
- B. deployment in two or more sites
- C. deployment of multiple ACE linecards
- D. transparent optimizations

Answer: B

QUESTION 42

What is the best way to mitigate latency?

- A. use NetFlow to isolate chatty protocols and filter them
- B. deploy a QoS solution
- C. deploy a less chatty application
- D. deploy an intelligent protocol proxy

Answer: D

QUESTION 43

What are the three major customer initiatives that can trigger the purchase of new infrastructural equipment? (Choose three.)

- A. WAN refresh
- B. slow application performance
- C. inline Virus Scanning deployment
- D. a need for server consolidation
- E. a movement to a Global DNS solution
- F. deployment of MPLS

Answer: A, B, D

QUESTION 44

Which Cisco solution enables data center scalability and greater manageability?

- A. central management of all protocol services
- B. DRE
- C. ACE virtualization
- D. protocol acceleration

Answer: C

QUESTION 45

Which two of these factors present a challenge in low-bandwidth environments? (Choose two.)

- A. network protocol security
- B. limits on the amount of data that can be sent
- C. server packet consolidation
- D. server consolidation
- E. data transmission negotiation

Answer: B, E